



CREATIVE BIOMART®

# Avi-Tag Biotinylated Proteins — 15-aa Precision Labeling for Greater Protein Potential

Precise Labeling • Consistent Activity • Infinite Possibilities

[Recombinant Protein](#) [Protein Analysis](#) [Events](#) [Promotion](#) [Contact Us](#)

## Key Features

**Site-Specific Labeling:** Our 15-aa Avi-Tags are biotinylated at a single lysine site catalyzed by BirA enzyme with labeling efficiency  $\geq 95\%$  (far from the active site), resulting in zero activity loss.

**Oriented Immobilization:** Our tags boast 100% oriented capture on streptavidin surfaces and are suitable for SPR/BLI chips, ELISA plates, flow cytometry beads, and magnetic beads, doubling the signal with CV<5%.

**Dual Tags:** We provide Avi + His / Fc / Flag combinations for purification, detection, and immobilization in one step, accelerating experiments by as much as 30%.

**High Batch-to-Batch Consistency:** Produced in HEK293 mammalian systems with authentic glycosylation; each batch undergoes quadruple quality checks through SDS-PAGE, SEC-HPLC, ELISA, and SPR.

**Ultra-Short Peptide Tag:** Only 1/5th the size of traditional chemical tags with low immunogenicity, ensuring no interference *in vivo* or *in vitro* applications.

**Flexible Scale:** We seamlessly accommodate any scale from  $\mu\text{g}$  to g and provide custom options, a rapid delivery of 4-6 weeks, and mutant/fusion designs.

**300+ Types of High-Activity Recombinant Proteins:** Covering over 10 species including human, mouse, monkey, and bovine, all precisely biotinylated by BirA enzyme with labeling efficiency  $\geq 95\%$ .

**Three Expression Systems:** HEK293, insect, or *E. coli* systems, offering true glycosylation and folding to meet diverse needs for basic research, antibody screening, and preclinical evaluation.

**Rapid Delivery of Stock Products and Hassle-Free Customization:** Standard products delivered in 4-6 weeks; with comprehensive support for bulk orders, mutations, and fusion designs from our professional team.

## Product Showcase

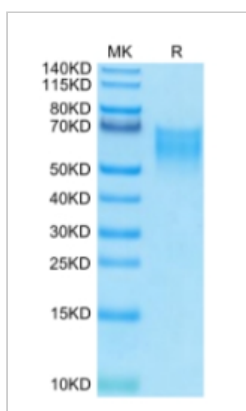
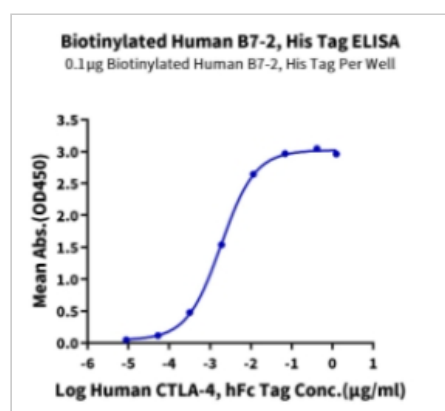
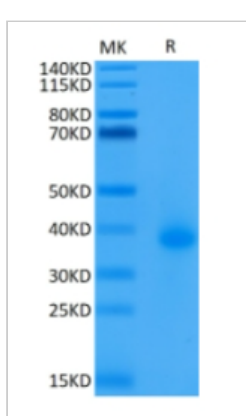


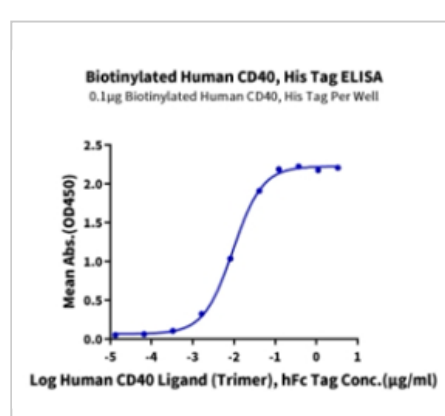
Figure 1. **Tris-Bis PAGE** of Recombinant Human CD86 protein, His-Avi-tagged, Biotinylated  
Cat.No.: [CD86-581H](#)



2. **ELISA** of Recombinant Human CD86 protein, His-Avi-tagged, Biotinylated  
Cat.No.: [CD86-581H](#)



3. **Tris-Bis PAGE** of Recombinant Human CD40 protein, His-Avi-tagged, Biotinylated  
Cat.No.: [CD40-2222H](#)



4. **ELISA** of Recombinant Human CD40 protein, His-Avi-tagged, Biotinylated  
Cat.No.: [CD40-2222H](#)

## Applications

**Drug Discovery:** Accelerated transition of candidate molecules into CMCs with antibody affinity maturation, epitope competition, and blocking/neutralization screening.

**Immunodiagnosics:** High-sensitivity sandwich ELISA, chemiluminescence, and lateral flow assays with LOD down to pg/mL.

**Cell Therapy:** Real-time evaluation of efficacy through CAR-T/CAR-NK antigen density detection, cell sorting, and *in vivo* tracing.

**Structural Biology:** Utilized for protein orientation uniformity in cryo-EM and crystallization, enhancing resolution by 20%.

**Vaccine Development:** Supports mRNA/recombinant protein vaccine quality control with neutralizing antibody titer determination and antigen presentation studies.

**Bioprocessing:** Enhances yield by 40% through chromatographic resin functionalization and continuous flow purification process development.

[Browse Our Product Catalog Now](#)

## Ongoing Promotion

Back-to-School Sale 2025 - 20% off

[Save Now](#)

Monthly Special Release - as jaw-dropping as 50% off

[Discover. Save. Enjoy](#)



CREATIVE BIOMART®

Professional,  
High Purity, High Yield,  
Bioactive, Batch Consistent,  
Global Delivery

**USA**  
45-1 Ramsey Road, Shirley, NY 11967, USA  
Tel: 1-631-559-9269 / 1-516-512-3133  
Fax: 1-631-938-8127

**Germany**  
65830 Kriftel, Gutenbergstraße 5. Frankfurt am Main, Germany  
+491793975992  
Email: [info@creative-biomart.com](mailto:info@creative-biomart.com)

[Global Locations](#)

CREATIVE BIOMART INC.

